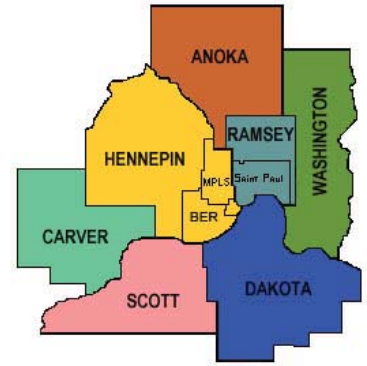


Data Matters

Age-Specific Birth Rates, 1994-2007



Volume 2009, Number 1

A publication of local public health agencies in the metropolitan area of Minnesota

Key Findings

- The total number of births per year in the seven-county metropolitan area increased by 9.5% between 1994 to 2007, from 37,534 births to 41,104.
- The number of births to women under age 18 has declined 21.3% from 1994 to 2007, but the number of births to women age 35 and older has increased 38.0% in that same time period.
- The majority of births occur to women age 25 to 34. Since 2005, most births occur to women age 25-29.
- The birth rate for women age 25 to 29 has gone up by roughly 50% in both Hennepin and Ramsey counties from 2002 to 2007, but has dropped in most of the other counties during that time period.
- The birth rate for women 35 to 39 has gone up 43.7% from 1994 to 2007 and 53.0% for women age 40 to 44 in that same time period.

Introduction

This report summarizes age-specific births from 1994-2007 in the seven-county metropolitan area in Minnesota. For this report, the metropolitan area includes Anoka, Carver, Dakota, Hennepin, Ramsey, Scott and Washington Counties, hereafter cited as the metro area. This report focuses on births to women between the age of 15 and 44. Vital statistics are from the Minnesota Department of Health, Center for Health Statistics.

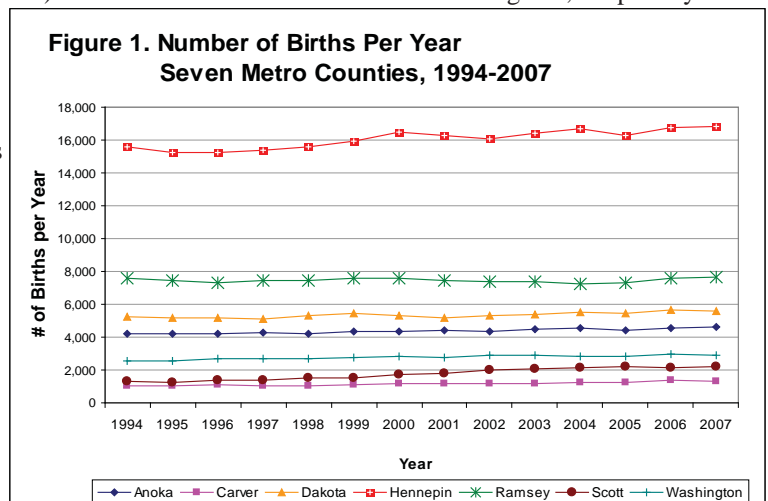
Background

Shifts in the age-specific birth rate pattern often result from and result in changes to society. When women delay giving birth, especially to their first child, there are policy and program implications for post-secondary education programs, workforce profiles, and housing. These shifts also have health-related implications, including: changes to the design and administration of pre-natal care programs for the mother and child; the use of fertility enhancement procedures by older women; and the higher probability of multiple births by those women.

This report will examine overall trends in the age-specific birth rates for both the metropolitan area as a whole and for the individual counties and the cities of Bloomington, Edina, and Richfield. Future reports will examine trends for teenage mothers and for older mothers.

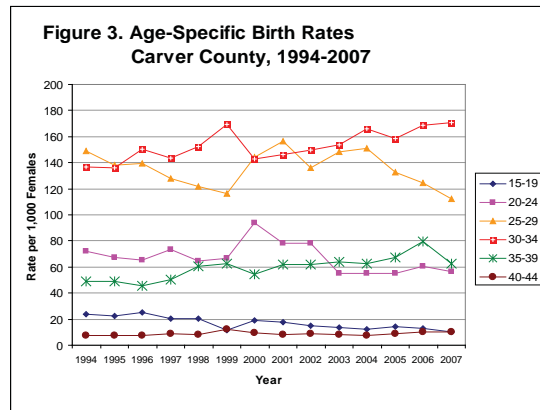
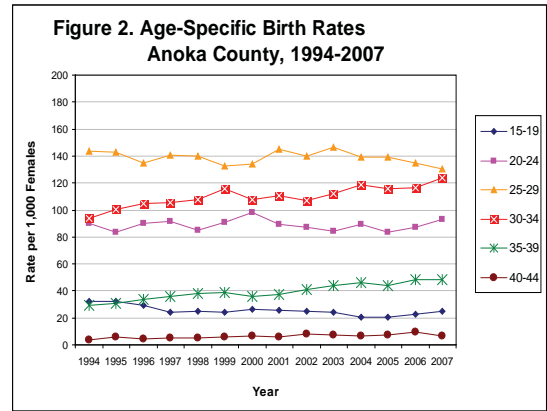
The total number of births in the metro area increased by 9.5% between 1994 to 2007, from 37,534 births to 41,104 births respectively. Between 1994 and 2007, there was a downward trend (-21.3%) in the number of births to females under age 18, coupled by a 38.0% increase in the number of births to females age 35 and older. However, the majority of births continue to be by mothers age 25-29 and 30-34 during the years reported (see Figure 12).

See Page 4 for more metro area results



Anoka County

The total number of births in Anoka County increased by 10.2 % between 1994 and 2007, from 4,193 births to 4,621 births respectively. For females age 15-19, there was a downward trend in the birth rate from a high in 1995 of 32 births per 1,000 females to a low of 20.3 births per 1,000 females in 2005, though the birth rate for this age group increased slightly in 2007 to 24.6 births per 1,000 females. The age-specific birthrate for the females age 40-44 was continuously the lowest birthrate among all age groups during the years reported. All age groups, except females 15-19 yrs, saw a general increase over time in their individual age specific birth rates from 1994 to 2007. The majority of births in Anoka County continue to be to mothers age 25-29 and 30-34 during the years reported.

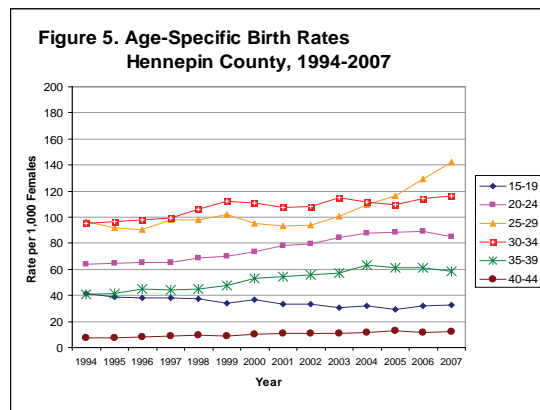
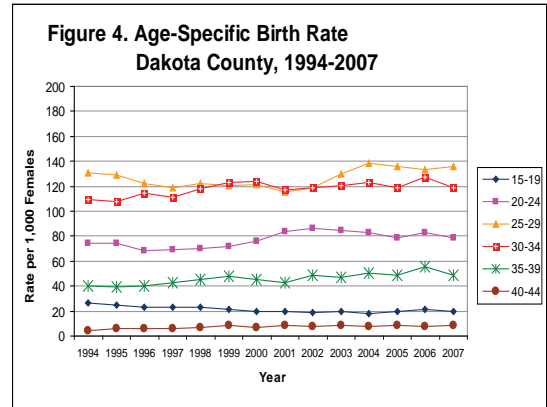


Carver County

The total number of births to mothers living in Carver County increased from 1,021 in 1994 to 1,278 in 2007. Birth rates for women age 15-19 lowered during this time period from a rate of 23.5 to 10.0 per 1,000 females. The birth rate for women age 25-29 has been dropping from a high of 156.1 per 1,000 females in 2001 to a rate of 112.5 per 1,000 females in 2007. For women 30-34, the rate rose from 136.6 per 1,000 females in 1994 to 170.5 in 2007. For women 35-39, the rate rose from 49.3 per 1,000 females in 1994 to 62.7 in 2007.

Dakota County

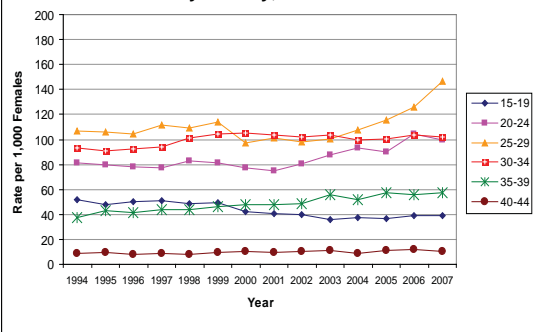
The total number of births to women 15-44 in Dakota County increased by 7 percent between 1994 and 2007, from 5,231 to 5,598. Between 1994 and 2007, the highest birth rate was to mothers 25-29, except for a short time between 1999 and 2001 when the rate for mothers 30-34 slightly exceeded or matched the rate in mothers 25-29. Births to mothers 25-29 generally increased between 2001 and 2007. Births to older mothers have generally increased, while births to younger mothers have generally declined. Births to mothers 35-39 increased slightly from 2001 to 2007. Births to mothers 15-19 declined slightly between 1994 and 2007. Births to mothers 20-24 increased from 1996 and started to decline after a peak in 2002.



Hennepin County

In Hennepin County, the birth rate per 1,000 women age 15 to 19 has declined markedly during 1994 to 2007, from 41.5 births to 32.3 births. The birth rates per 1,000 for all other age groups have shown increases over the same time period. The changes in the birth rate for women age 25 to 29 has been the most notable; the rate has increased from 96.5 births per 1,000 in 1994 to 142.3 births per 1,000 in 2006. That is, the rate for women age 25 to 29 has increased more (proportionally) than the changes observed for the other age groups. The total number of births in Hennepin County has increased from 15,618 in 1994 to 16,836 in 2007.

**Figure 6. Age-Specific Birth Rates
Ramsey County, 1994-2007**



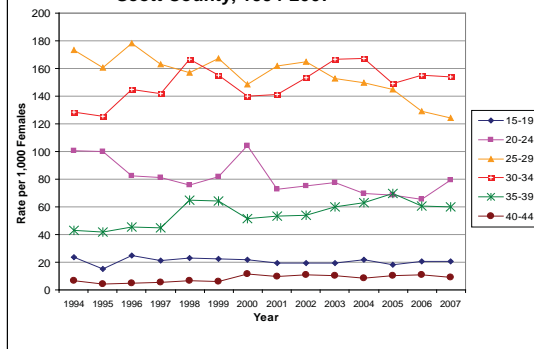
Ramsey County

Ramsey County experienced a slight increase in total number of births from 7,605 in 1994 to 7,678 births in 2007. In contrast, births among women age 15-19 dropped, with birth rates showing a marked decline from 52.1 to 39.4 per 1000 females. From 1994 to 2007, the birth rates among all other age groups have risen. Through most of these years, the largest number of births took place among women age 25-29. The greatest birth rate growth occurred among the groups of women age 25-29 with a birth rate increase from 107.0 to 146.8, and among women age 35-39 with a birth rate increase from 37.8 to 57.1. In parallel manner, birth rates among women age 30-34, increased from 93.1 to 102.3 per 1000 females. During this same time period, the smallest number of births occurred among women age 40-44, yet this group still saw a small rise in birth rates from 8.4 to 10.5 per 1000 females.

Scott County

The total number of births to mothers living in Scott County increased from 1,302 in 1994 to 2,181 in 2007. Birth rates for women age 15-19 stayed fairly flat over this period. The birth rate for this group in 2007 was 20.7 per 1,000 females. The birth rate for women age 25-29 has been dropping from a high of 178.1 per 1,000 females in 1996 to a rate of 124.5 per 1,000 females in 2007. For women 30-34, the rate rose from 128.3 per 1,000 females in 1994 to 155.1 in 2006. For women, 35-39, the rate rose from 43.0 per 1,000 females in 1994 to 60.1 in 2007.

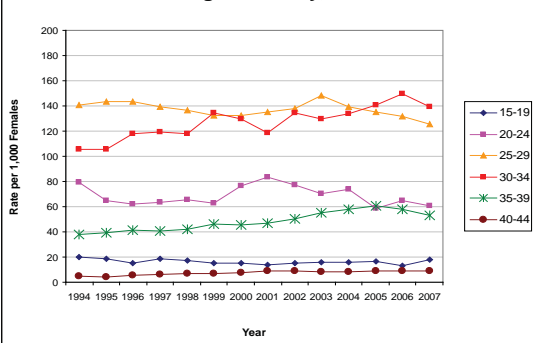
**Figure 7. Age-Specific Birth Rates
Scott County, 1994-2007**



Washington County

The total number of births in Washington County increased by 12.9% between 1994 and 2007, from 2,563 births to 2,893 births respectively. There was a gradual increase in the number of births to females age 35-39. The number of births to females in the 40 to 44 age range more than doubled between 1994 and 2007, from 41 to 84 births. The majority of county births continue to be in the 25-29 and the 30-34 age ranges. The most significant overall birth rate decline occurred in the 20-24 year old age range, from a rate of 79.6 in 1994 to 60.8 in 2007. During this same time period, birth rates generally increased for older females. Births rates increased between 2003 and 2006 among 30-34 year olds, then fell slightly in 2007. For 35-39 year olds, rates increased steadily from 1994 to a peak in 2005, then declined slightly in 2006 and 2007.

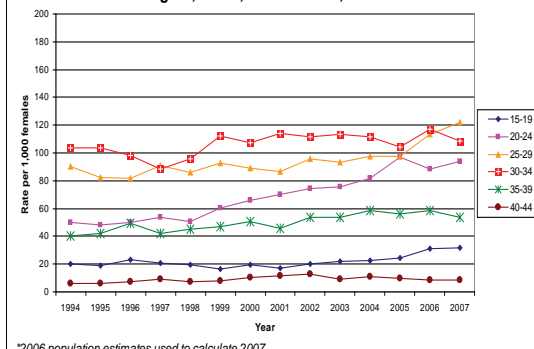
**Figure 8. Age-Specific Birth Rates
Washington County, 1994-2007**



Bloomington, Edina, and Richfield

The total number of births in the cities of Bloomington, Edina, and Richfield (BER) has increased from 1,994 births in 1994 to 2,106 births in 2007. The age specific birth rate for females 15-19 years remained relatively stable from 1994-2002, but has showed an upward trend during the last 6 years. The age specific birth rate for females 20-24 years, increased the most dramatically over the stated time frame from 49.7 in 1994 to 94.1 births per 1,000 females in 2007. The highest age specific birth rate from 1998-2006 was to females 30-34 yrs, however, in 2007 for the first time in 10 years, the highest age specific birth rate was to females age 25-29 years at 121.9. Additionally, the age-specific birth rate to females age 35-39 years saw a noteworthy increase over the years of 39.9 births per 1,000 females in 1994 to 58.6 births per 1,000 females in 2006, however, this age specific birth rate decreased in 2007 to 53.6.

**Figure 9. Age Specific Birth Rates,
Bloomington, Edina, and Richfield, 1994-2007***



*2006 population estimates used to calculate 2007

Figure 10. Number of Births to Mothers Age 17 and Younger, Seven Metro Counties, 1994-2007

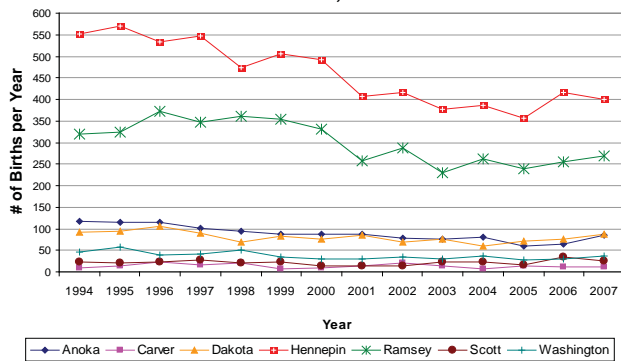


Figure 11. Number of Births to Mothers Age 35 and Older, Seven Metro Counties, 1994-2007

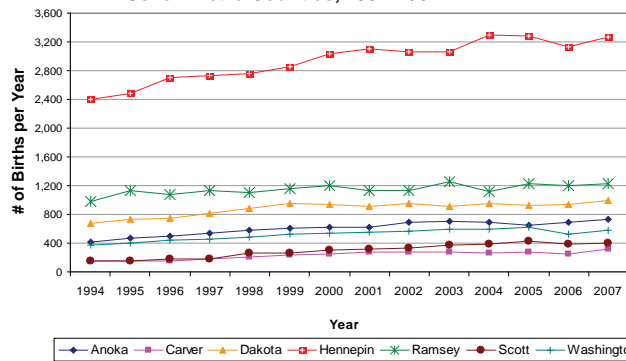
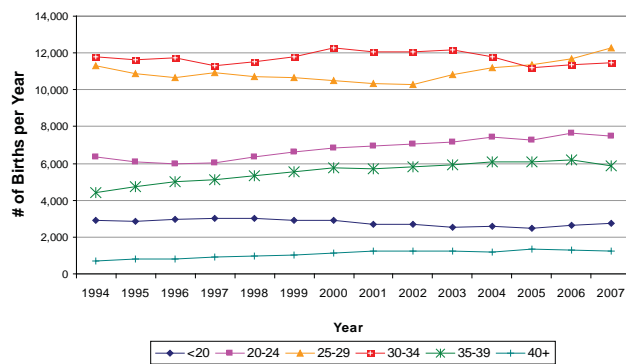


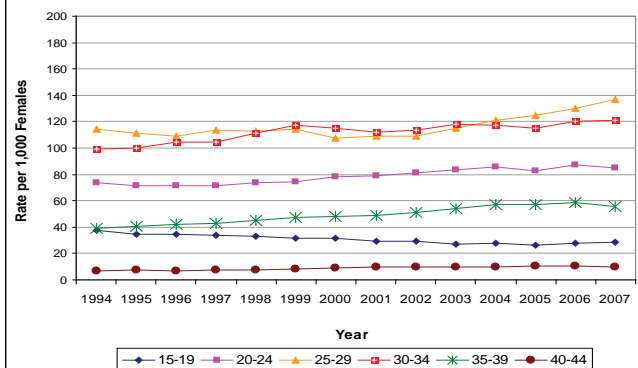
Figure 12 shows that from 1994 through 2004, most births in the metro area occurred to women age 30 to 34 compared to other age categories. Since 2005, however, most births occur to women age 25 to 29. The number of births annually to women age 25 to 29 has increased from 10,348 in 2002 to 12,280 in 2007 - a 19.3% increase. From 2002 to 2007, the birth rate for women age 25 to 29 has increased roughly 50% in both Hennepin and Ramsey counties. In comparison, however that rate increased only 14.2% in Dakota County, and dropped in the other metro counties.

Figure 12. Number of Births by Mother's Age, Seven Metro Counties, 1994-2007



More than 50% of all births in the metro area are to women age 25 to 34. However, the percent of all births to women in that age range has dropped from 61.6% in 1994 to 57.8% in 2007. That drop is due in large part to an increase in the birth rate for women age 35 and older. Figure 13 shows that the birth rate for women age 35 to 39 has increased from 38.9 births per 1,000 women to 55.9 during 1994 to 2007 - a 43.7% increase. Similarly, the birth rate for women age 40 to 44 has increased from 6.6 births per 1,000 women to 10.1, a 53.0% increase, during that same time period.

Figure 13. Age-Specific Birth Rates Seven Metro Counties, 1994-2007

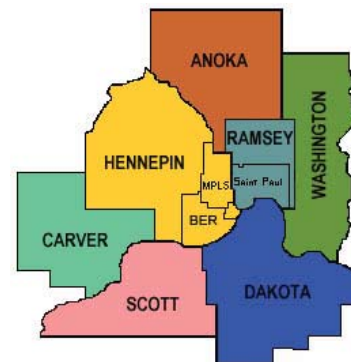


Data Source: Minnesota Center for Health Statistics as geocoded by the Metro Public Health Data Analysis Work Group.

For More Information

Data Matters is a project of the Metro Public Health Data Analysis Work Group, a collaborative effort among eight local public health agencies in the Minneapolis-Saint Paul area in Minnesota. These agencies include: Anoka County Community Health and Environmental Services, Bloomington Public Health also serving Edina and Richfield (BER), Carver County Public Health Division, Dakota County Public Health Department, Hennepin County Human Services and Public Health Department, Saint Paul-Ramsey County Department of Public Health, Scott County Public Health, and Washington County Department of Public Health and Environment.

For more information on **Data Matters** or other public health data for the seven-county metropolitan area, please contact PublicHealthData@gmail.com or go to <http://sites.google.com/site/PublicHealthData>



Metro Public Health Data Analysis Work Group